

# Reader

## Quick Start Guide Guide de démarrage

PRS-505

Portable Reader System

© 2007 Sony Corporation Printed in China 3-274-631-01(2)

### English

#### About the serial number

The serial number provided for this unit is required for customer registration. The number is on a label on the back of the unit. Do not remove the label.

#### Owner's Record

The model and serial numbers are located on the back of the unit. Record them in the space provided below. Refer to these numbers in the spaces whenever you call upon your Sony dealer regarding this product.

Model No. \_\_\_\_\_  
Serial No. \_\_\_\_\_

#### On Copyrights

The contents of each book pre-installed on this product are copyrighted works, edited with the cooperation of the publisher and editor hereto mentioned. Copyright laws prohibit copying the data of this product or the contents of this manual (illustrations, related documents, etc.) in whole or in part without the permission of the copyright holder. Additionally, use of the data of this product or the contents of this manual is not allowed without Sony's permission except for personal use.

- SONY and the SONY logo are registered trademarks of Sony Corporation.
- BBEB, BBEB Book, and their logos are trademarks of Sony Corporation.
- "Memory Stick", "Memory Stick Duo", "Memory Stick PRO", and their logos are trademarks of Sony Corporation.
- Bitstream is a registered trademark, and Dutch, Font Fusion, and Swiss are trademarks of Bitstream Inc.
- Microsoft, Windows, Windows Vista and Windows Media are trademarks or registered trademarks of Microsoft Corporation in the United States and / or other countries.
- Adobe, Adobe Reader and Adobe PDF are trademarks or registered trademarks of Adobe Systems Incorporated in the United States and/or other countries.
- MPEG Layer-3 audio coding technology and patents licensed from Fraunhofer IIS and Thomson.

All other system names and product names appearing in this document are generally the registered trademarks or trademarks of their respective manufacturers. Further, the trademark ™ and registered trademark ® symbols are not indicated throughout this document.

Program ©2006, 2007 Sony Corporation  
Documentation ©2006, 2007 Sony Corporation

## What You Can Do with Reader

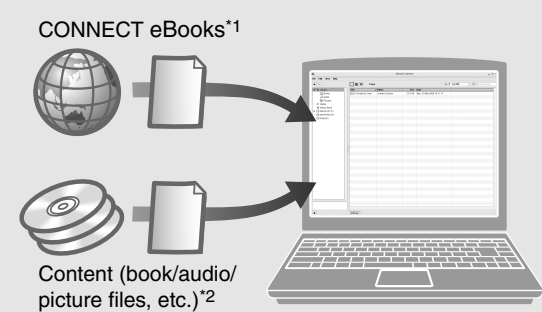
Thank you for purchasing this Sony Portable Reader System PRS-505. Read through this Quick Start Guide to prepare the Reader for use. Once initial preparation is complete, you can transfer content from your computer to the Reader to take it anywhere you wish.

### Getting Started

- Read this manual for initial preparation.
- Charge the Reader.
- Install eBook Library on your computer.

### Importing

Download eBooks from CONNECT eBooks from your computer.



- \*1 Online eBook store
  - \*2 Content that you already have can also be transferred.
- For details on content type compatible with the Reader, refer to the User's Guide (PDF).

### Transferring

Transfer content from your computer to the Reader using eBook Library.



### Reading/Playing/Viewing

Enjoy content on the Reader.



## Getting Started

### 1 Checking the package contents

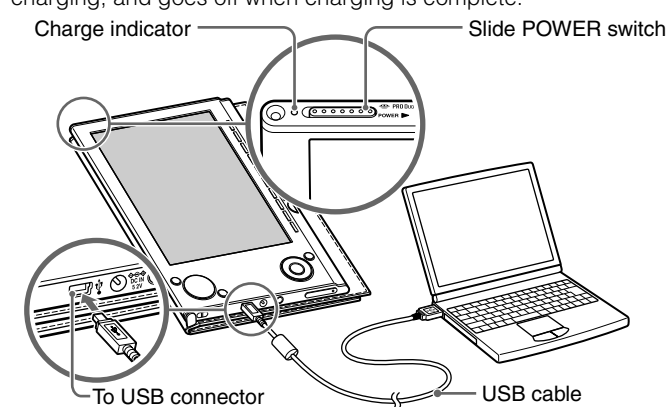
The Reader comes installed with a built-in rechargeable battery.

- Reader (with Soft cover) (1)
- USB cable (1)
- CD-ROM (1)
- eBook Library software
- User's Guide (PDF)
- Sample contents
- Quick Start Guide (this manual) (1)
- Flyers
- Dummy cards (2)

**Note**  
• This CD-ROM will not play in an audio CD player.

### 2 Charging

First, charge the Reader battery, as battery power may not be sufficient immediately after purchase. Turn on the Reader, then connect the Reader to your computer using the supplied USB cable. The indicator lights up red while charging, and goes off when charging is complete.



**Notes**  
• When you connect the Reader to your computer, (indicating connection via a USB) is displayed on the Reader's screen. If the battery has been fully depleted, it takes about 40 minutes until is displayed, and you will not be able to turn on the Reader by the POWER switch during this time. In this case, wait until is displayed. The indicator lights up in red while is not displayed, and the Reader is charged.

- If the remaining battery power of a connected notebook computer is low, charging via USB connection may not be possible.
- If you connect the Reader to a notebook computer which is not connected to an AC outlet, the battery of the notebook computer will be drained. Do not leave the Reader connected to a notebook computer which is not connected to an AC outlet for an extended period.

**Hint**  
• The Reader can also be charged by connecting to an AC outlet using the AC Adaptor for Reader (AC-S5220E) (optional).

### 3 Installing eBook Library

- 1 Turn on the computer and start Windows.**  
Log on using an account with administrator privileges and connect to the Internet with your computer.
- 2 Insert the supplied CD-ROM into your computer's drive.**  
The launcher appears.
- 3 Select "Install eBook Library."**  
The Install Wizard screen appears. Follow the on-screen instructions to install. Subsequently, install the User's Guide as well by selecting "Install PRS-505 User's Guide (PDF)" on the launcher.

If the installation is not successful, refer to "When installation is not successful - Q&A" on this Quick Start Guide.

#### To start eBook Library

- 1 Double-click the eBook Library icon ( ) on the Windows desktop.**
- Hint**  
• You can also start eBook Library by clicking the Start menu and then selecting "All Programs" - "Reader" - "eBook Library."

### 4 Customer registration

It is recommended that you perform customer registration by registering your contact information, which enables Sony to send you information regarding technical support, software updates, etc.

- 1 Select "Product Registration Website" on the launcher.**

### System requirements

The following are requirements to use eBook Library.

OS	
Microsoft Windows Vista	Windows Vista Home Basic Windows Vista Home Premium Windows Vista Business Windows Vista Ultimate
Microsoft Windows XP	Microsoft Windows XP Home Edition Windows XP Professional Windows XP Media Center Edition Windows XP Media Center Edition 2004 Windows XP Media Center Edition 2005
CPU	800 MHz Celeron class processor or better
RAM	128 MB or more (minimum 512 MB for Windows Vista)
Free space on hard disc	20 MB or more Depending on the content amount, more space may be required.
Monitor	High Color or more, 1024 x 768 pixels or more (True Color, 1280 x 1024 pixels, or more recommended)
Other devices	CD-ROM drive, USB port, pointing device such as mouse or track pad

- Internet connection (broadband recommended, some fees may apply) is also required on your computer.
- This software is not supported by the following environments:
  - An operating system other than those included above
  - Personally built computer or operating system
  - Upgraded manufacturer-installed operating system
  - Multi-boot environment
  - Multi-monitor environment
  - Macintosh

#### When installation is not successful - Q&A

- Q1 Does your computer meet system requirements?**  
A1 Check that your computer meets the system requirements listed above.
- Q2 Were you logged on as an "Administrator," did you close all running software programs before beginning the installation?**  
A2 Log on as "Administrator."  
Close all running software programs, including background programs such as virus-protection software.
- Q3 The set-up program does not start automatically.**  
A3 If the set-up program does not start automatically when you insert the CD-ROM, click "Start" on the Windows taskbar, click "My Computer," and then double-click the optical disc drive icon to start the program.
- Q4 Is the progress bar in the installation window moving, and the access lamp of the CD drive flashing?**  
A4 When the bar is moving and the lamp is flashing, the installation is still in progress. Please wait for the installation to finish.

If the solutions listed here do not resolve the issue, refer to "Support" on this Quick Start Guide.

**Hint**  
• For the latest information on eBook Library and to download any software updates, visit the Web site:  
<http://www.sony.com/reader>

## How to Use

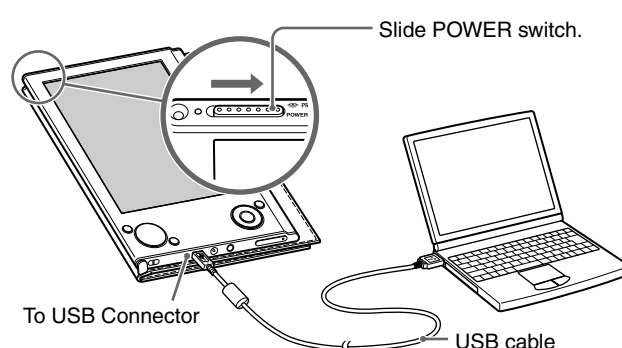
### 5 Importing eBooks from CONNECT eBooks to eBook Library

You can purchase (download) eBooks from the online eBook store "CONNECT eBooks" to your computer.

**Hint**  
• The following explains how to import/transfer/read eBooks. For details on other content formats supported by the Reader, refer to the User's Guide (PDF) included on the CD-ROM.

**Note**  
• To purchase (download) eBooks, you need to prepare an Internet-accessible environment on your computer.

- 1 Turn on the Reader, then connect it to your computer using the supplied USB cable.**

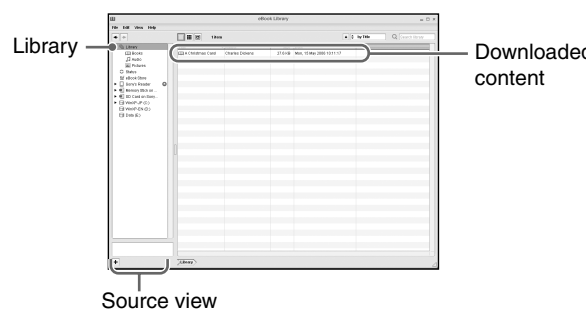


**Hint**  
• When you connect the Reader to your computer with eBook Library started, the date and time of the Reader is automatically synchronized with your computer clock.

- 2 Click the Start menu, then select "All Programs" - "Reader" - "eBook Library" to start eBook Library.**
- 3 Click "eBook Store" in the Source view of eBook Library.**  
The eBook Store page appears.
- 4 Follow the instructions in the store to authorize the Reader and your computer.**

Authorization is required only on the first visit to CONNECT eBooks.

- 5 Follow the instructions in the store to purchase (download) eBooks.**  
Downloaded eBooks are automatically imported to "Library" in the Source view of eBook Library.

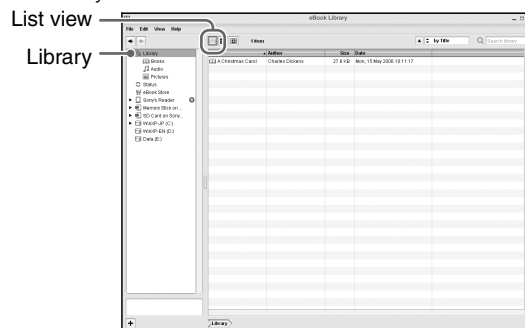


**Hint**  
• eBooks can be read on eBook Library using your computer. For more information about using eBook Library, refer to the eBook Library Help.

### 6 Transferring eBooks from your computer to the Reader

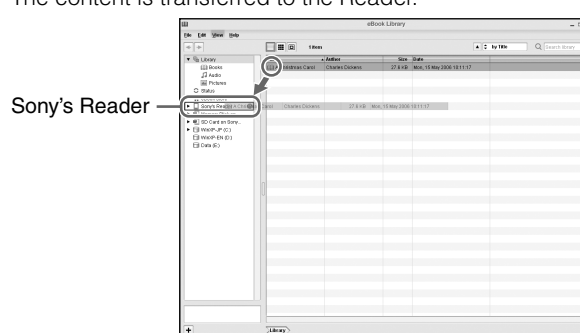
- 1 Check that eBook Library is running and that the Reader is connected to your computer using the USB cable.**  
"Sony's Reader" appears in the Source view of eBook Library.
- 2 Click "Library" in the Source view, then click (List view).**

The View area is switched to the List view and all the content in Library is listed.



**Hints**  
• When you click "Books," "Audio" or "Pictures" in the Source view, only their respective content types are displayed.  
• When you click (Thumbnail view), content can be displayed as thumbnails.

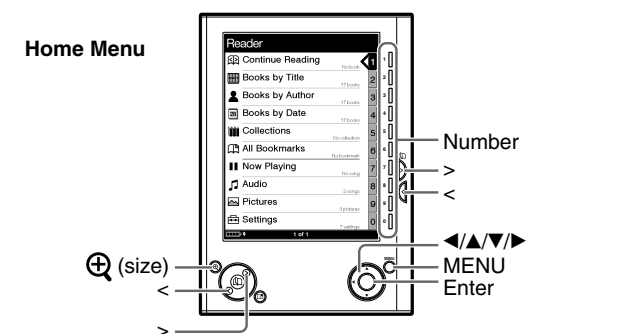
- 3 Select the content you want to transfer from the list.**  
To select multiple content, click the content while holding down the Ctrl key.
- 4 Drag the content from the list to "Sony's Reader" in the Source view.**  
The content is transferred to the Reader.



**Notes**  
• Do not disconnect the USB cable from the Reader while data is being transferred.  
• Do not leave the Reader connected for extended periods to a notebook computer that is not connected to AC power, because the Reader may drain the computer's battery.  
• If the computer enters a power saving mode, such as the system suspend, sleep or hibernation while the Reader is connected to the computer directly, the Reader battery will not be charged. Instead, the Reader will continue to draw power from its battery, discharging it.

**On transferring via a memory card**  
• To transfer eBooks to a memory card on the Reader, insert the memory card in the Reader, then follow the above steps (except drag and drop the content on "Memory Stick on Sony's Reader/SD Card on Sony's Reader" in step 4). For details, refer to "Transferring content via a memory card" in the User's Guide.  
• With a memory card slot on your computer or a memory card reader, you can also transfer content directly to the memory card and then insert it in the Reader.  
If a memory card is inserted in your computer or a memory card reader, the memory card icon appears in the Source view. Follow the above steps (except drag and drop the content on "Memory Stick on PC/SD Card on PC" in step 4) to transfer to a memory card.  
• When inserting the memory card into the Reader, it may take time for the Reader to recognize the content files in the memory card if the capacity of the content files stored on the memory card is large.

### 7 Reading eBooks on the Reader



- 1 From the Home menu, press to select "Books by Title", then press Enter.**

The Book list appears. If the contents of the book on the Reader and the memory card exceed 30 items, the Index menu appears. The Book list can be further sorted by selecting the category item in the Index menu. For details, refer to "Sorting the Book list" in the User's Guide.

**Hint**  
• You can easily select a desired item by pressing the same number button as indicated on the number tab.

- 2 Press to select the desired book from the list, then press Enter.**

The Option menu appears.

- 3 Press to select how to open the book, then press Enter.**

- 4 Press to proceed to the next page.**  
To return to the previous page, press .

- 5 Press (size) if you want to zoom in the page.**

The page can be magnified.  
To restore the original scale, press (size) repeatedly.

**To close the book**  
Press MENU.

**Hint**  
• To return to the Home menu, press and hold MENU.

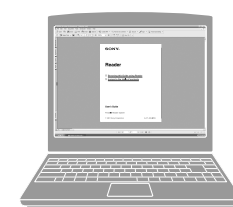
## Read to learn about advanced features

Included with the Reader is this Quick Start Guide and the PDF-format User's Guide pre-loaded on the Reader. Additionally, after installing the supplied eBook Library, you can refer to the Help within eBook Library.

### User's Guide (PDF)

Contains instructions for advanced features of the Reader and troubleshooting information.

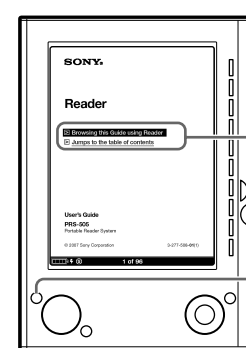
### Browsing the User's Guide on your computer



The PDF file of the User's Guide is provided on the supplied CD-ROM. Click the Start menu at the bottom left of the Desktop, then select "All Programs" - "Reader" - "PRS-505 User's Guide" to start Adobe Reader and open the User's Guide. For details on how to use Adobe Reader, refer to Adobe Reader Help.

**Hint**  
• To view the User's Guide, you should have installed Adobe Reader 5.0 or later. Adobe Reader can be downloaded by selecting "Get Adobe® Reader®" on the launcher.

### Browsing the User's Guide using Reader



The PDF file of the User's Guide is transferred to PRS-505. From the Home menu, select "Books by Title" - "User's Guide" from the Book list.

**Hints**  
• A mark in this Guide indicates a link. Press to select the desired link, then press Enter to jump to the linked page.  
• To zoom in a page, press (size).

### eBook Library Help

Provides detailed information about using eBook Library and the Reader.



## Support

If you encounter an issue, try the following.

- If you cannot install eBook Library  
Refer to "When installation is not successful - Q&A" in this Quick Start Guide.
- For other issues  
Refer to the "Troubleshooting" section in the User's Guide.

If the issue persists

Visit the support site (<http://www.sony.com/readersupport>).

If the issue still persists

Contact Sony Portable Reader System Support Center.  
Phone number : 1-866-962-7669  
For details, refer to "Other Information" in the User's Guide.

